

Museums and Communities Working To Build Back Better

Bringing museum practices to community planning



Museums and Communities Working To Build Back Better

Bringing museum practices to community planning

Julia Bland

Louisiana Children's Museum

jbland@lcm.org

Brad Larson

Story Habitat

brad@storyhabitat.com

Joe Cox

Museum of Discovery and Science

joseph.cox@mods.org

Betsy Loring

exploring exhibits & engagement

betsy@exploringexhibits.com

Agenda

Introduction What is Planning? Examples

Case Study 1: Resilience Planning

Case Studies 2: Water Management Planning

Case Study 3: Community Story Projects

Table Brainstorms

Report out & Wrap-up



How familiar are you with planning?

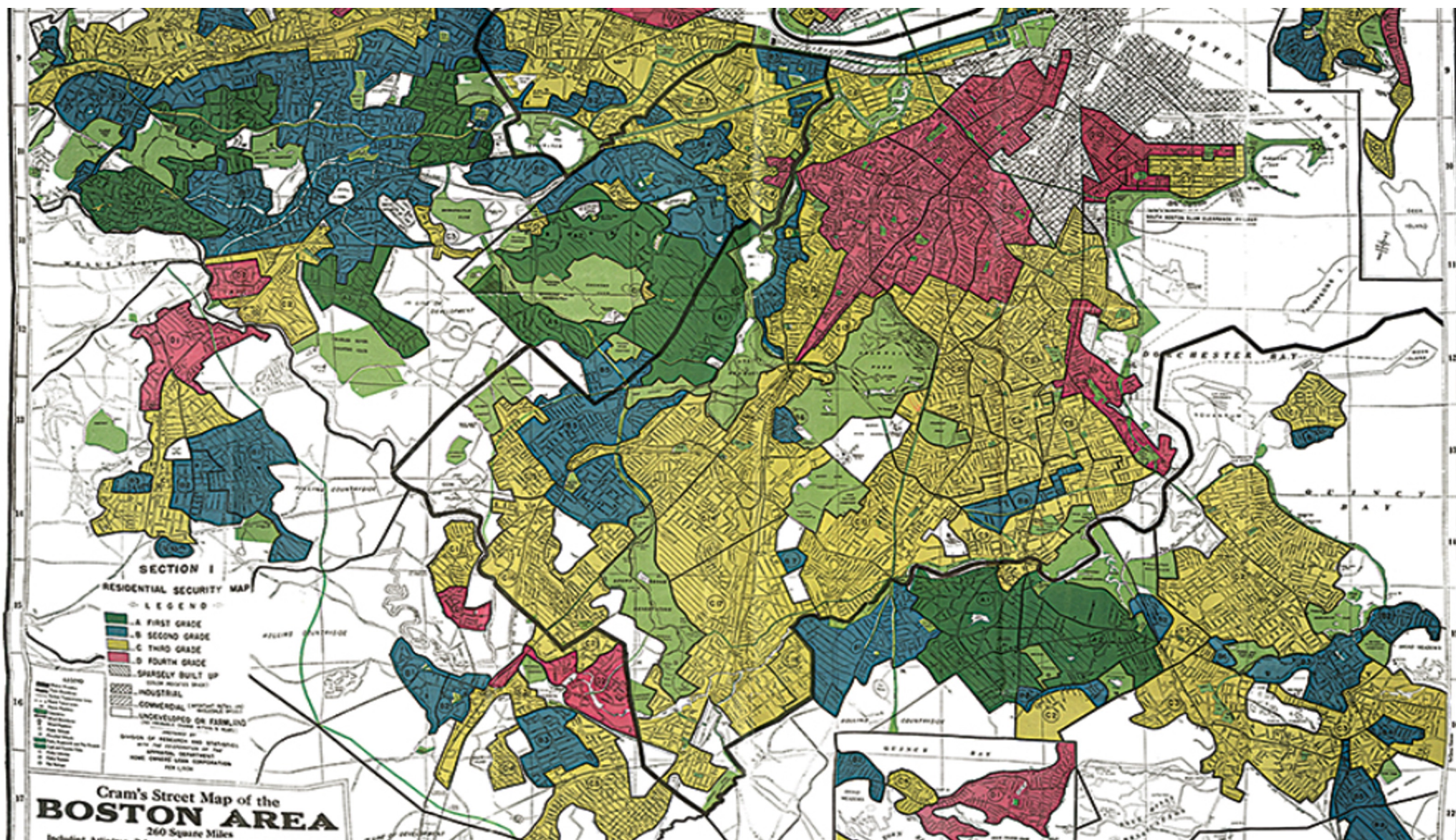
- 1 - 5 Fingers:
 - 1 - not at all!
 - 2 - I can define it
 - 3 - I've read my community's plan
 - 4 - I /we have participated in a planning event
 - 5 - We've partnered with planners!





“The goal of planning is to maximize the health, safety, and economic well-being of residents in ways that reflect the unique needs, desires, and culture of those who live and work within the community.”

~ Cynthia Bowen, Past President, American Planning Association



Many Names:

- City/Town Plan
- Regional Plan
- Long-Range Plan
- Master Plan
- General Plan

Many Sub-Plans:

- Climate Resilience
- Housing
- Transportation
- Downtown/District
- Trees and Greening

Public Engagement



“Planners have little inherent power.”



People *really* like thinking about the ideal community design!

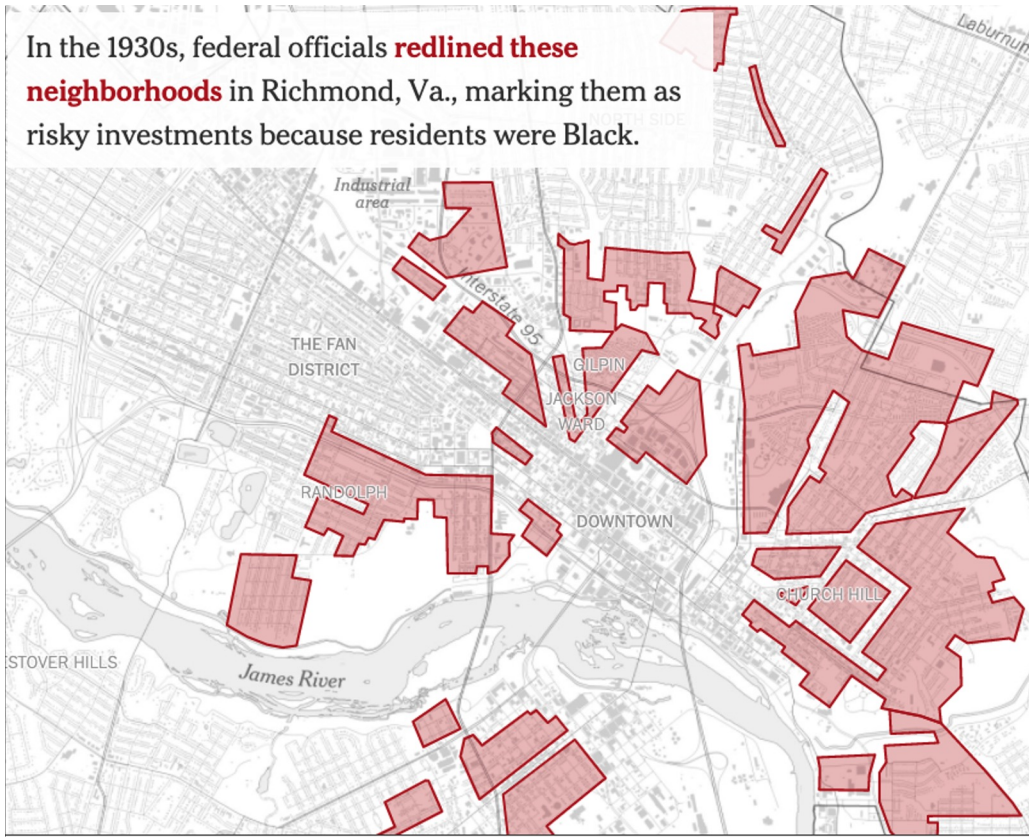




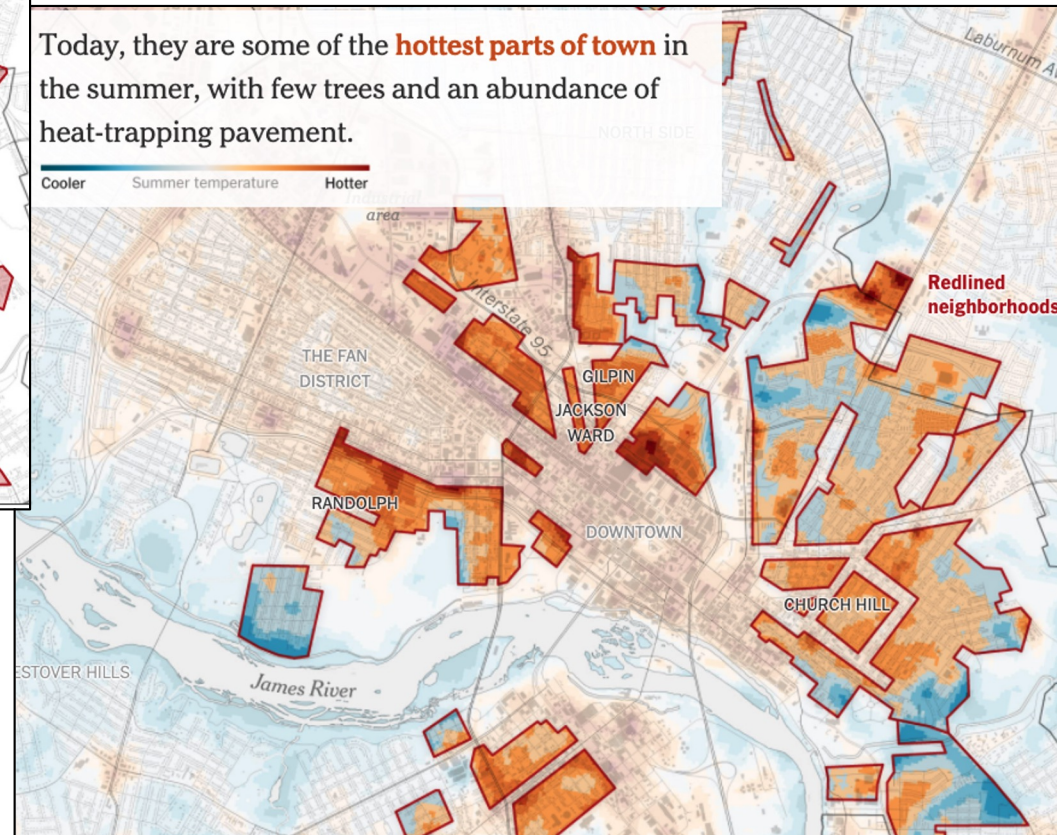
Science Museum of Virginia



In the 1930s, federal officials **redlined these neighborhoods** in Richmond, Va., marking them as risky investments because residents were Black.



Today, they are some of the **hottest parts of town** in the summer, with few trees and an abundance of heat-trapping pavement.





Exploratorium Studio for Public Spaces

Because I dress frumpy, people think I act
pathologically...

But actually I volunteer weekly and call attention
to government abuses of the community.



It's Political -
Look for the Levers



MUSEUM OF DISCOVERY AND SCIENCE



mods.org



@modsftl

MODS HUB FOR RESILIENCY EDUCATION



MODS HUB FOR RESILIENCY EDUCATION

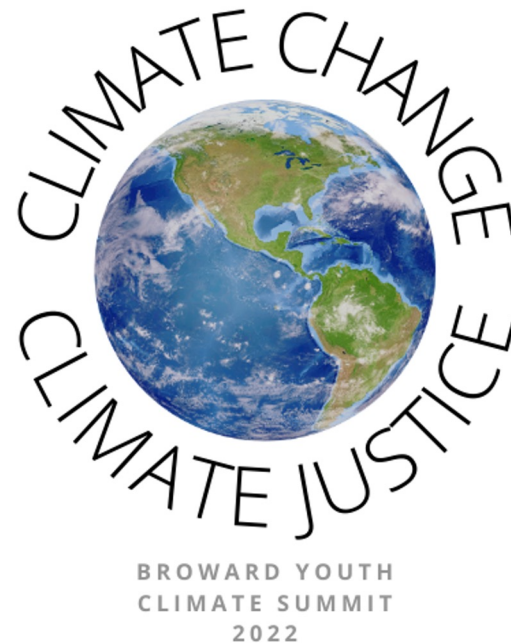
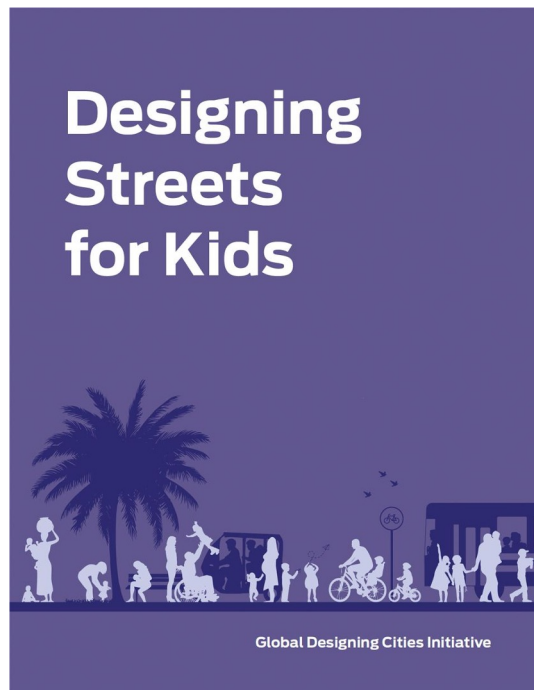
- Introduce the latest scientific concepts related to coastal resiliency and climate change
- Engage visitors in a creative atmosphere that inspires innovative thinking
- Support South Florida's emerging resiliency industry by cultivating workforce development, seeding entrepreneurship and economic vitality in areas of solutions to these issues
- Increase environmental literacy and empower people to protect themselves and their communities



MODS HUB FOR RESILIENCY EDUCATION



MODS HUB FOR RESILIENCY EDUCATION



Think Like A Planner: High School Students

- This event provides each student with the opportunity to shadow transportation professionals and conduct their own short group presentations before elected officials.

#ThinkLikeAPlanner



MODS HUB FOR RESILIENCY EDUCATION

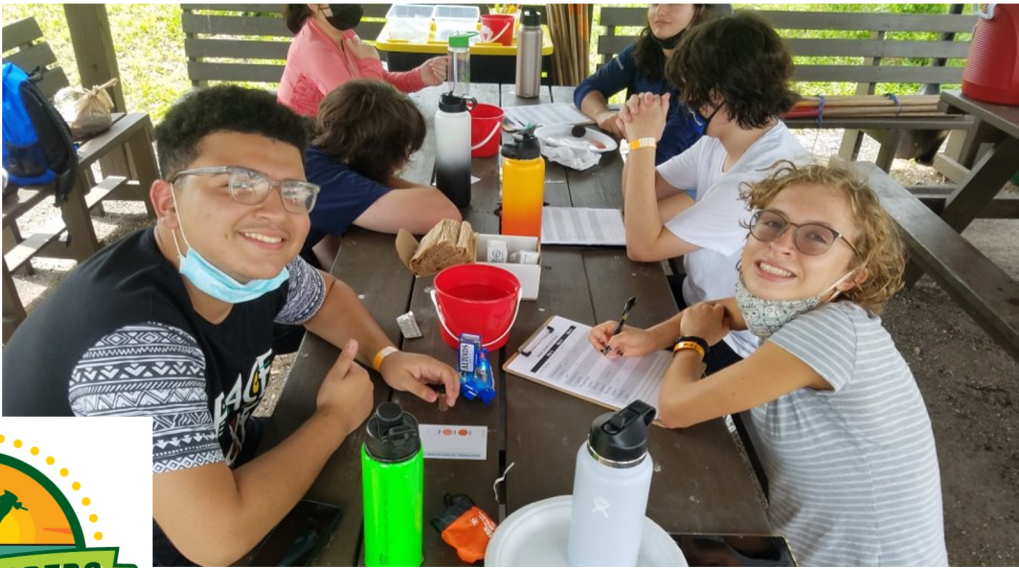
- Workforce Development & Public Education
- Staff & Public Engagement
- Museum in Action
- Onsite and Traveling Exhibit



MODS HUB FOR RESILIENCY EDUCATION

- Policy in Action
- Natural Systems
- Water Supply
- Resiliency Innovation
- Energy Resources
- Built Environment
- Transportation







QUESTIONS?

Joe Cox

President and CEO

joseph.cox@mods.org

954.713.0900

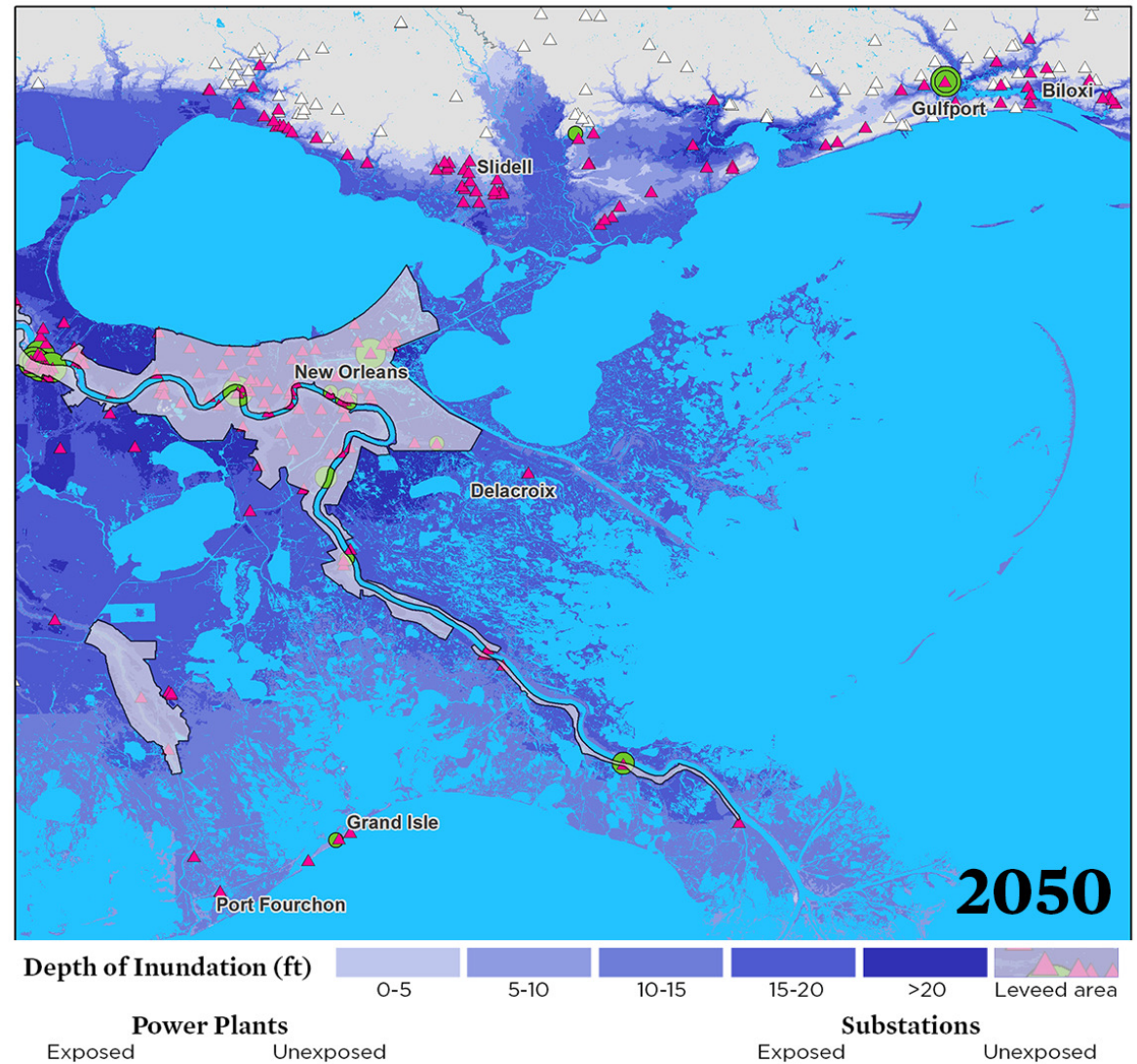


A powerful
motivator!

Land loss
projections

a few decades
out...

Potential Depth of Flooding From a Category 3 Hurricane: New Orleans, LA



Living with
Water – and
learning to
consider it an
asset



Green infrastructure

7,000-gallon cistern collects rainwater from the roof to be used for irrigation in the landscape





Water Trails lead us around the site to understand Ecosystems, Bioswales, Recycled materials, Nature's Drains and more.



... and explorers
traveled by water. That's why
the Mississippi river is important
because how else would they
have founded New Orleans?

Kennedy, Age 9

Water
Journals –
why water is
important in
our lives

HOUSE

What does my resilient city need?

Museums
Museos

Libraries
Bibliotecas

Schools
Escuelas

Gardens
Jardines

Stores
Tiendas



Waterfront Stories Project

Friends of Waterfront Seattle

Goal: gather local residents' stories connecting diverse communities benefiting from increased park space on Seattle's waterfront

Format: popup exhibits outside Pike Place Market, waterfront paths, and Salmon Homecoming Festival



<https://www.bradlarsen.com/waterfront-stories-project-seattle-2/>

<https://www.bradlarsen.com/friends-of-waterfront-seattle-videos/>



Fresh Paint Mural Arts Festival

Community Stories

Goal: gather community stories about improvements in downtown Springfield MA related to the mural arts festival

Format: Storybike popup recording station with 42 DesignFab, and additional popup paint/draw activities for families at the festival



<https://www.bradlarsen.com/storybike-fresh-paint/>

Suitcase Stories Project

Refugee and immigrant stories in local communities

- Collaboration with nonprofit International Institute of New England
- Highlight the experience of refugees and immigrants as they make a new life here
- Foster a more welcoming and inclusive environment for newcomers
- Tie-ins with museums, local PBS, local news



Choose a Topic for Your Story

What is your first memory here in the US?

What is one thing you brought from your home country that is most precious?

What person have you met here who has had the greatest influence on you?



International
Institute of
New England



An illustration of four business professionals in dark blue suits standing around a large table covered with architectural blueprints. The background is a solid light green. In the center, a white rectangular box with a black border contains the text "Questions? Comments?".

Questions?
Comments?

Table

Discussions

What was/might be your role in planning?

- Leadership
- Cohort/collaborator
- Researcher/data contributor
- Stakeholder/representative
- Other?

Report Out & Wrap Up