

Mistakes Were Made Returns!

Session Chair

Kathy Gustafson-Hilton, Hands On! Studio

Presenters

Amparo Leyman Pino, Education Consultant, Yellow Cow Consulting

Chad Gehring, Exhibit Director, Thanksgiving Point

Katie Price, Grants Project Manager, Montshire Museum of Science

ASSOCIATION OF CHILDREN'S MUSEUMS

INTERACTIVITY 2022

Play the Long Game

MAY 16-18, 2022

Our Learning Objectives

Admitting mistakes isn't a sign of weakness. It's a sign of professionalism to learn from other's mistakes to avoid repeating them.

Together we can create a playful, safe, interactive environment that encourages us to share and celebrate personal and organizational growth and learning.

Reflection helps us identify what we, as a field, are doing to encourage or suppress discussion of mistakes that we (and our museums) make.

ASSOCIATION OF CHILDREN'S MUSEUMS

INTERACTIVITY 2022

Play the Long Game

MAY 16-18, 2022

Start thinking!

ASSOCIATION OF CHILDREN'S MUSEUMS
INTERACTIVITY 2022

Play the Long Game

MAY 16-18, 2022

Assumptions we make when working with other cultures

A mistake made by



Amparo Leyman Pino
Principal
Yellow Cow Consulting
(San Francisco, USA)



Working in the Middle East





ROOTING REFLEX







Once Upon a Time...

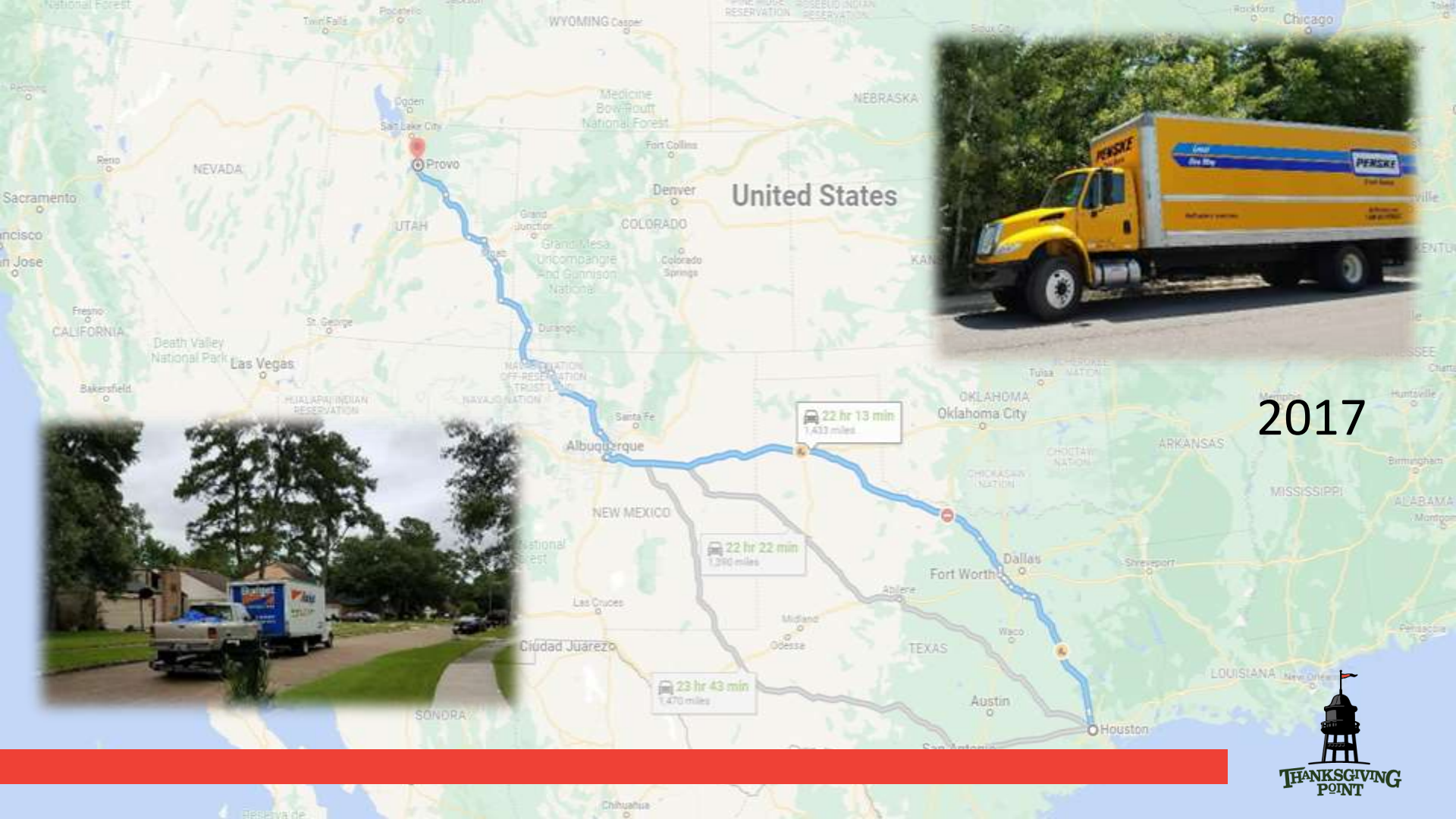
© DESPAIR.COM



MISTAKES

IT COULD BE THAT THE PURPOSE OF YOUR LIFE IS
ONLY TO SERVE AS A WARNING TO OTHERS.



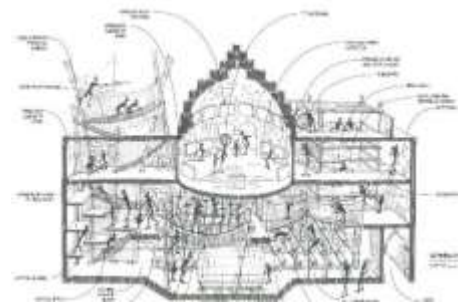




2014







2009 - 2014





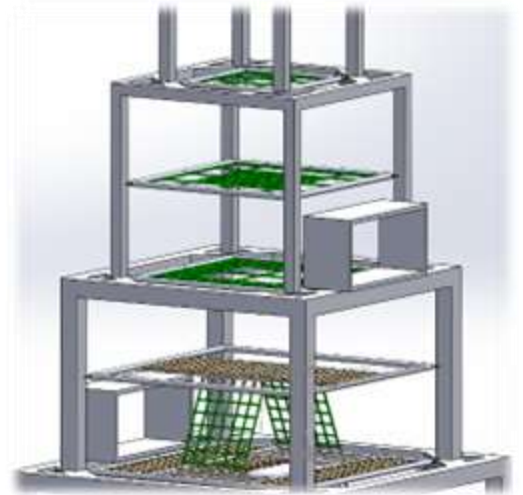
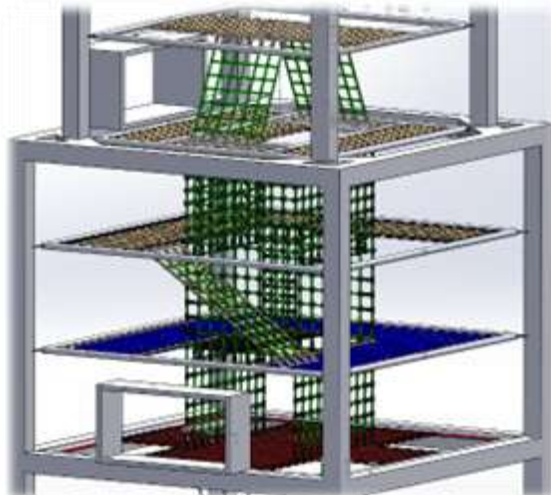
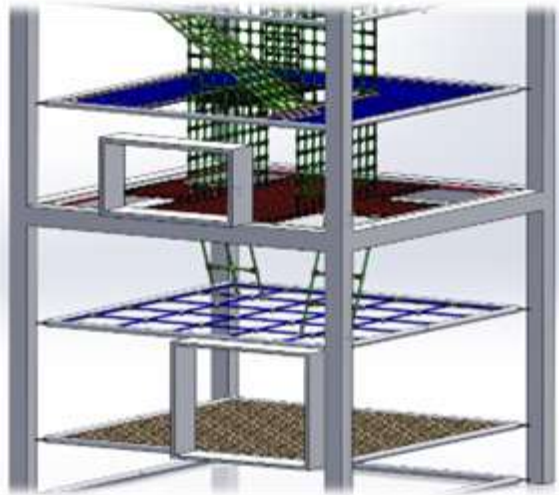






Why did it take four years to realize it was a bad design?





InCord

Custom Safety Netting Solutions

2018







- Why do we keep some things in our exhibits even though they are high maintenance and potentially hazardous?



- Why do we keep some things in our exhibits even though they are high maintenance and potentially hazardous?
- How can we better recognize where change is needed?



- Why do we keep some things in our exhibits even though they are high maintenance and potentially hazardous?
- How can we better recognize where change is needed?
- What if we gave every employee the opportunity to recommend one exhibit to eliminate or replace?





The End

Montshire Museum of Science (Norwich, VT)





Families Learning Together





STRENGTHENING FAMILIES NETWORK
Playgroup Connections



And with the best of intentions....





The Biggest Issue...







Awarding the Epic Failure Trophy 2022

ASSOCIATION OF CHILDREN'S MUSEUMS

INTERACTIVITY 2022

Play the Long Game

MAY 16-18, 2022

Thank you for coming to Mistakes Were Made Returns!

Session Chair

Kathy Gustafson-Hilton, kathy@hostudio.net

Presenters

Amparo Leyman Pino, amparo@yellowcow.net

Chad Gehring, cgehring@thanksgivingpoint.org

Katie Price, katie.price@montshire.org

ASSOCIATION OF CHILDREN'S MUSEUMS

INTERACTIVITY 2022

Play the Long Game

MAY 16-18, 2022