

Our collaboration

- **Connecticut Science Center, Hartford CT**
 - Mission: To inspire lifelong learning through interactive and innovative experiences that explore our changing world through science.
- **Cognitive Development Labs, Wesleyan University**
 - Research focus: How children and adults perceive, think about, and learn about numbers & math, space & time, and people.

Our team

Connecticut Science Center Megan Dempsey

Public Programs Coordinator



**Amy Sailor, Community & School Partnership
Administrator**

Visitor Services Staff



Joanna Paul



Ilana Ladis



Kerry Brew



Sarah Corner

Cognitive Development Labs Hilary Barth

Associate Professor

**Lab
Coordinator**



Alexandra Zax

**Student
Coordinator**



Sheri Reichelson

Undergraduate Research Assistants



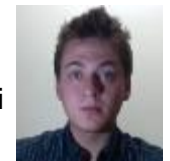
Aime Arroyo-
Ramirez



Maxine Lai



Praise Owoyemi



Jordan Feingold-Link

Our Living Lab

- History
 - Began with this partnership (also, link to JHU/Maryland)
 - Discussion began Fall 2012; first visit March 2013
- Why Living Lab?
 - Supports core goals of both organizations
- Our Living Lab
 - One 3-hr researcher visit/week, ~8 per semester/summer
 - As of April 2016: 837 participants, 741 educational opportunities, 413* research toy interactions

Our Living Lab



Our Living Lab

- Mutual Professional Development
 - Student researcher training by Megan Dempsey, Public Programs Coordinator
 - Sharing current research reports
 - Research toy interactions led by students
- Current research studies at the Living Lab
 - Children's decision making
 - Development of spatial memory

Next steps

- In the midst of becoming a multi-site collaboration
- CogDevLabs – NSF proposal with LL components has been recommended for funding
- Greater professional development of Visitor Services staff – training on research toy activities?
- Broadening undergraduate student involvement?